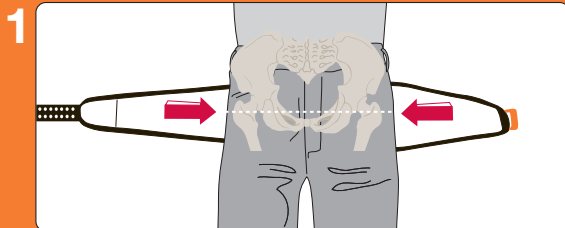
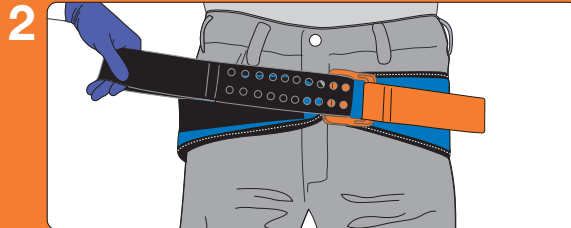


SAM Pelvic Sling™ II instructions



Remove objects from patient's pockets or pelvic area. Place SAM Pelvic Sling™ II white side up beneath patient at level of trochanters (hips).



Place **BLACK STRAP** through buckle and pull completely through.



Hold **ORANGE STRAP** and pull **BLACK STRAP** in opposite direction until you hear and feel the buckle click. Maintain tension and immediately press **BLACK STRAP** onto surface of SAM Pelvic Sling™ II to secure.

Note: do not be concerned if you hear a second "click" after SAM Pelvic Sling™ II is secured.

TO REMOVE, lift **BLACK STRAP** by pulling upward. Maintain tension and slowly allow SAM Pelvic Sling™ II to loosen.

! The SAM Pelvic Sling™ II should remain firmly attached to the patient while in the MRI room.
In case of prolonged use, monitor patient's skin.



Emergo Europe
Molenstraat 15
2513 BH The Hague, The Netherlands

rev.Sli-203-Civ-11