

# CHIPSLEEVE ARM



## FEATURES

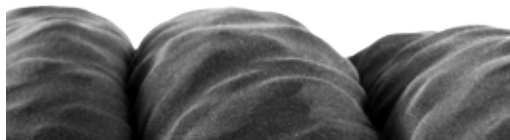
- 15–25mmHg of mild, gradient compression from hand to axilla when used with the OVERSLEEVE (included, see page 62)
- Open cell foam chips massage fibrotic tissue, stimulating fluid movement and helping to soften the superficial tissue
- Use as a bandage liner or independent compression garment
- Four-way stretch fabric contains moisture-wicking, odor control properties
- Safe for day or nighttime use
- Custom size available (see page 58)
- Easy care - machine wash and dry
- Latex-free

## INDICATIONS

- Stage I or II Lymphedema
- Mild fibrosis
- Post-surgical edema

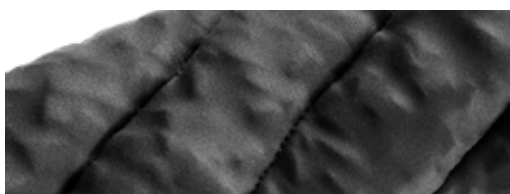
## INCLUDES

- 1 CHIPSLEEVE arm garment
- 1 Arm OVERSLEEVE (5–10mmHg)



### DIRECTIONAL CHANNELS

Channel formations facilitate efficient lymph drainage



### FOAM CHIPS

Open cell foam chips massage superficial lymphatics



## INCLUDES OVERSLEEVE (SEE PAGE 62 FOR COLOR OPTIONS)

- Six different OVERSLEEVE patterns available!
- The CHIPSLEEVE provides 15–25mmHg of mild, gradient compression when used with the OVERSLEEVE

|        |           |         |      |
|--------|-----------|---------|------|
| P.O. # | Account # | Contact | Date |
|--------|-----------|---------|------|

|       |              |     |        |        |
|-------|--------------|-----|--------|--------|
| Phone | Patient Name | Age | Height | Weight |
|-------|--------------|-----|--------|--------|

Company Name

Dropship Name & Address

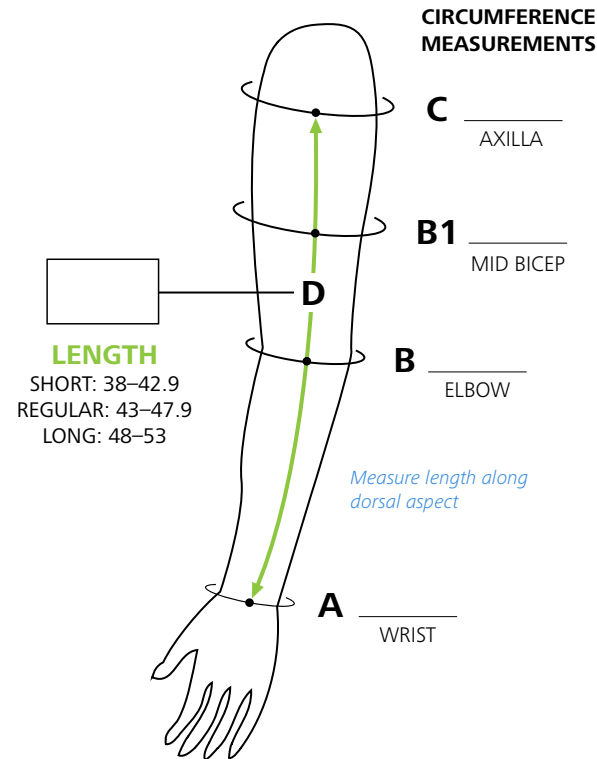
Product Information

Arm  
 LEFT  RIGHT

|      |        |        |                  |
|------|--------|--------|------------------|
| Size | Length | Item # | OVERSLEEVE Color |
|------|--------|--------|------------------|

**A PDF of this order form can be found online at [bit.ly/SIGmccOrderforms](http://bit.ly/SIGmccOrderforms)**

*Note: if no color is specified, a black OVERSLEEVE will be included. See page 62 for color options.*



**CHIPSLEEVE ARM SIZING CHART (A–C, NO HAND)**

|    | SMALL   | MEDIUM  | LARGE   | XLARGE  | XXLARGE |
|----|---------|---------|---------|---------|---------|
| C  | 23–32cm | 28–37cm | 33–43cm | 39–49cm | 44–54cm |
| B1 | 22–30cm | 26–34cm | 30–39cm | 35–44cm | 39–49cm |
| B  | 20–27cm | 24–31cm | 28–35cm | 32–39cm | 36–43cm |
| A  | 14–17cm | 15–18cm | 16–19cm | 18–20cm | 19–22cm |

**LEFT**

|                |            |            |            |            |            |
|----------------|------------|------------|------------|------------|------------|
| <b>SHORT</b>   | 2631-ARS-L | 2632-ARS-L | 2633-ARS-L | 2634-ARS-L | 2635-ARS-L |
| <b>REGULAR</b> | 2631-ARR-L | 2632-ARR-L | 2633-ARR-L | 2634-ARR-L | 2635-ARR-L |
| <b>LONG</b>    | 2631-ARL-L | 2632-ARL-L | 2633-ARL-L | 2634-ARL-L | 2635-ARL-L |

**RIGHT**

|                |            |            |            |            |            |
|----------------|------------|------------|------------|------------|------------|
| <b>SHORT</b>   | 2631-ARS-R | 2632-ARS-R | 2633-ARS-R | 2634-ARS-R | 2635-ARS-R |
| <b>REGULAR</b> | 2631-ARR-R | 2632-ARR-R | 2633-ARR-R | 2634-ARR-R | 2635-ARR-R |
| <b>LONG</b>    | 2631-ARL-R | 2632-ARL-R | 2633-ARL-R | 2634-ARL-R | 2635-ARL-R |

Measuring instructions on inside cover

Custom sizes and configurations are available for CHIPSLEEVE. For more information, please see page 58 or speak with your SIGVARIS Sales Representative or Customer Care: 1.866.931.0876.