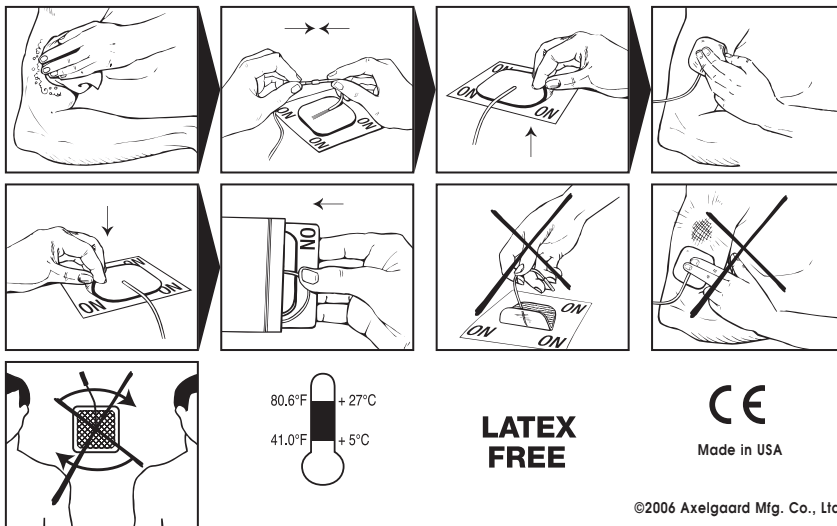


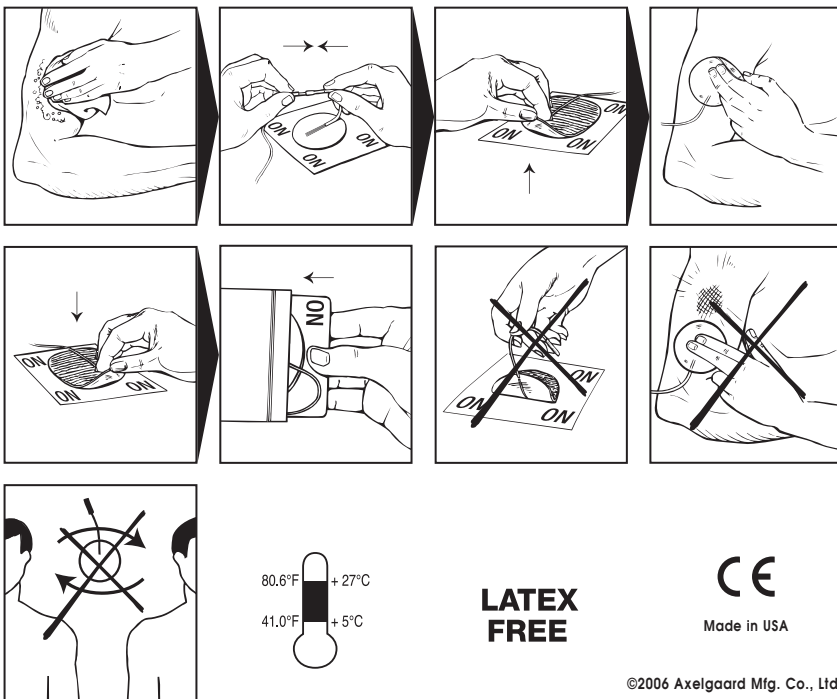
©2006 Axelgaard Mfg. Co., Ltd.

1. Skin must always be clean, dry and free from lotion.
2. Do not apply to broken skin. Should a skin rash or skin burn occur, immediately discontinue use and contact your clinician.
3. Adjust stimulator according to stimulator and/or clinician instructions for your treatment. For your safety and comfort, turn off the stimulator before you attempt to remove electrodes from your skin.
4. Consult stimulator manual for proper electrode size. Do not exceed an intensity of 0.1 Watt/cm<sup>2</sup>.
5. When electrodes begin losing adhesion, gently rubbing one or two drops of water onto gel surface **may** extend usage. If not, replace with new electrodes.
6. Do not stimulate while driving or operating machinery.
7. In the USA, Federal Law restricts this device to sale by, or on the order of, a physician or other practitioner licensed to use the device.

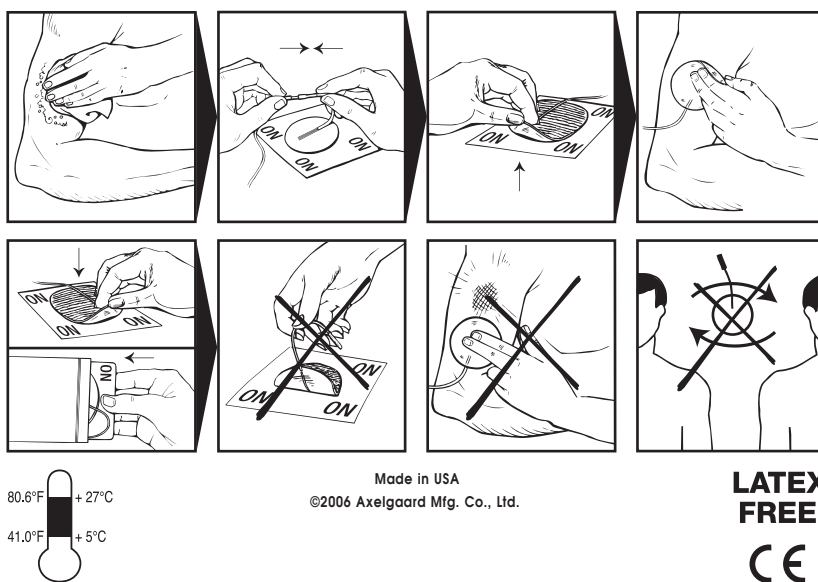


©2006 Axelgaard Mfg. Co., Ltd.

1. Skin must always be clean, dry and free from lotion.
2. Do not apply to broken skin. Should a skin rash or skin burn occur, immediately discontinue use and contact your clinician.
3. Adjust stimulator according to stimulator and/or clinician instructions for your treatment. For your safety and comfort, turn off the stimulator before you attempt to remove electrodes from your skin.
4. Consult stimulator manual for proper electrode size. Do not exceed an intensity of 0.1 Watt/cm<sup>2</sup>.
5. When electrodes begin losing adhesion, gently rubbing one or two drops of water onto gel surface **may** extend usage. If not, replace with new electrodes.
6. Do not stimulate while driving or operating machinery.
7. In the USA, Federal Law restricts this device to sale by, or on the order of, a physician or other practitioner licensed to use the device.



©2006 Axelgaard Mfg. Co., Ltd.



Made in USA  
©2006 Axelgaard Mfg. Co., Ltd.

**LATEX FREE**  
**CE**