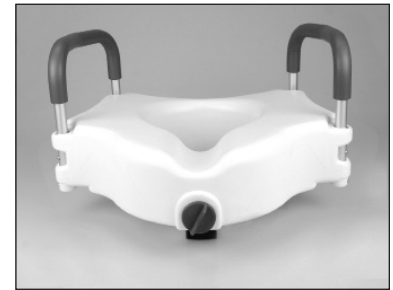
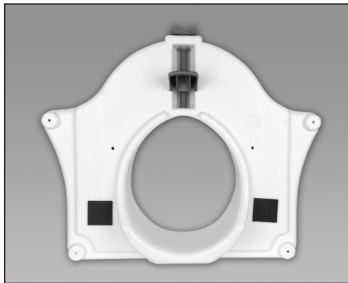


Homecraft Locking Raised Toilet Seat with Arms

0817-05-383



Before Installation

Remove the Toilet Riser from package, making sure it has not been damaged during handling and shipping. Contact Performance Health if you find damage.

Read the following instructions and make sure you understand them. For clarification of any step, consult a healthcare professional. Improper installation and incorrect user positioning on the raised seat, could lead to personal injury.

To achieve a secure fit, the toilet seat may need to be taken off; if this is the case, use your hands or pliers to remove the nuts and bolts of the original seat. Another fit requirement is that the front adjustment bracket be able to clear the rim of the toilet.

Installation

Place the raised seat on the rim of toilet, centering it over the bowl. Position the rear of the toilet seat around the rim of the toilet bowl and depress the raised seat in front. Hand-turn the adjustment knob on the front of the seat, going clockwise to tighten and counterclockwise to loosen. Take care not to over-tighten the knob as the threads could be damaged.

Precautions

The Raised Toilet Seat works with most standard commodes but not all; do not use it if it doesn't fit.

To avoid personal injury and damage to the product, the user's weight must be distributed evenly on the Riser so that it will not move.

To achieve and maintain balance, the user should be seated in the center—not too far forward nor to one side. Any instability puts the user at risk of sliding off the raised seat and falling.

Supervision or assistance should be provided for users who are weak or tend to be unbalanced.

Before each use, ensure the adjustment knob is tight so that it is locked.

Test for stability before each use. Do not exceed the user weight capacity of 300 lbs.

Care

Clean with basic cleaning products and warm water; rinse and dry. Do not use abrasive or organic solvent products such as scouring pads, acetone, lacquer thinner, turpentine or lighter fluid as they may damage the toilet seat.

Limited Product Warranty

Performance Health Supply, Inc. warrants that all products shall be free from manufacturing defects for a period of one year from the date of shipment. OTHER THAN THE FOREGOING WARRANTY, PERFORMANCE HEALTH SUPPLY, INC. MAKES NO REPRESENTATION OR WARRANTY OF ANY KIND, EXPRESS OR IMPLIED, AS TO MERCHANTABILITY, FITNESS FOR A PARTICULAR PURPOSE OR ANY OTHER MATTER RELATING TO THE PRODUCT. Customer must notify Performance Health Supply, Inc. of any manufacturing defect within five days of discovery of the defect. Upon a determination by Performance Health Supply, Inc. that the product is defective, Performance Health Supply, Inc. sole and exclusive obligation shall be to provide customer with a replacement product or a full refund of the purchase price, at the sole discretion of Performance Health Supply, Inc., and to reimburse customer for any return freight costs. In no event shall Performance Health Supply, Inc. be liable for any other costs or expenses including lost profits or direct, indirect, consequential, incidental or punitive damages. The warranty set forth herein shall govern all purchases, notwithstanding any inconsistent terms and conditions of customer's purchase order.



Distributed by:

Performance Health Supply, Inc.
28100 Torch Parkway,
Ste. 700
Warrenville, IL 60555, USA
Phone: 800-323-5547
Direct Phone: 630-393-6000
Fax: 800-547-4333
Direct Fax: 855-393-7600

Manufactured for:

Performance Health Supply, Inc.
W68 N158 Evergreen Blvd.
Cedarburg, WI 53012, USA
Phone: 800-323-5547
Fax: 800-547-4333

Authorized European Representative

Performance Health
International, LTD.
Nunn Brook Road
Huthwaite, Sutton-in-Ashfield
Nottinghamshire, NG17 2HU, UK

United Kingdom

Phone: 03444 124 330
Fax: 03448 730 100
International
Phone: +44 (0) 1623 448 706
Fax: +44 (0) 1623 448 784

Rev. December 2016
© Performance Health Supply, Inc.
081706316