



bed support rail assembly instructions



fast and easy assembly,
no tools required

se ensambla de
forma sencilla,
rápida y sin
herramientas



P566-00

1

part check

support rail



support rail legs



underbed frame



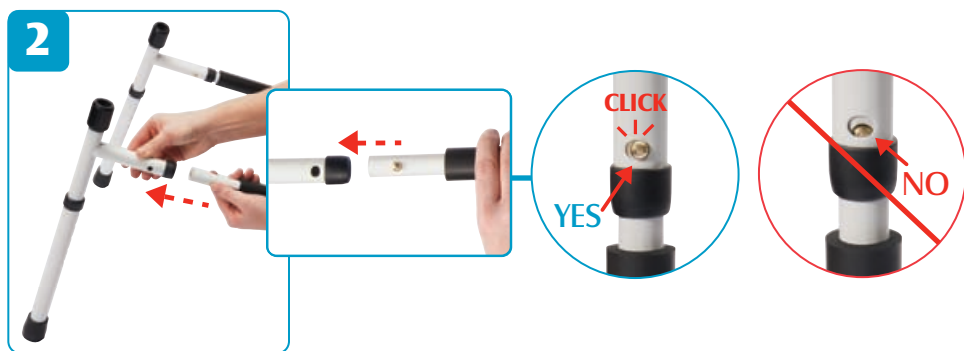
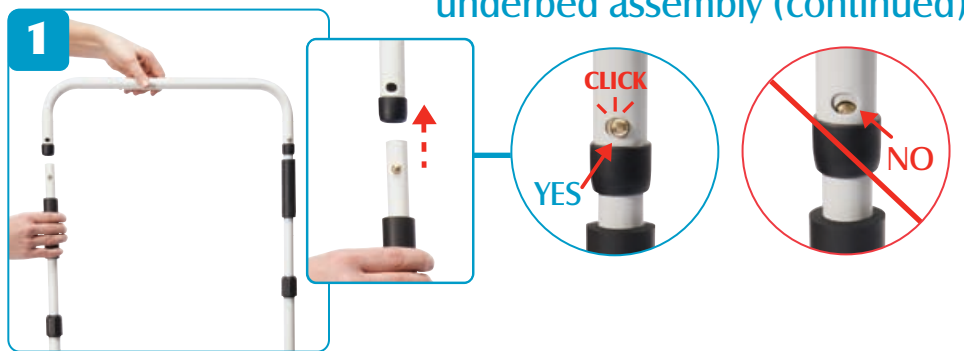
2

underbed assembly



TO AVOID SERIOUS
INJURY, ENSURE THAT
THE ADJUSTMENT
KNOBS HAVE BEEN
SECURELY TIGHTENED.

underbed assembly (continued)



support rail assembly

3



4 adjusting the depth & height

depth adjustment



leg adjustment



height adjustment



 TO AVOID SERIOUS INJURY,
ENSURE THAT THE
ADJUSTMENT KNOBS
HAVE BEEN SECURELY TIGHTENED
AND THAT THE SNAP BUTTONS ARE
SECURELY IN PLACE.