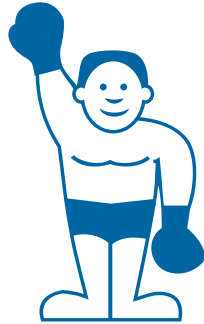


INSTRUCTIONS FOR OPERATION AND CARE OF



LITTLE
Splint

Compact Splint Pan

Model LS-1



Whitehall
Manufacturing[™]

800-782-7706 • 626-968-6681 • www.whitehallmfg.com

Whitehall Manufacturing is a Member of Acorn Engineering's Family of Companies.



Introduction 3

Model Descriptions 3

Caution 4

Warning 4

Danger 4

Basic Set Up and Use Instructions 5

Removal of Water 5

Cleaning and Sterilizing 5

To Change the Temperature Setting 5

Changing the Fuse 5

Repair of Unit 5

Parts Diagram Wiring Assembly 6

Instructions for Operation and Care of Little Splint Compact Splint Pan



Congratulations on receiving your compact Little Splint Thermal Bath.

The Little Splint's interior accommodates splinting sheets up to 8-1/2" x 12" (22cm x 30cm). The insulated stainless steel lid is functionally designed to open completely with just one hand, leaving the other hand free. The unit is entirely built out of stainless steel for long lasting durability.

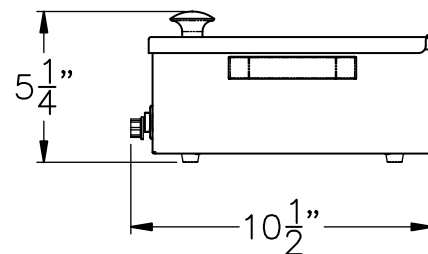
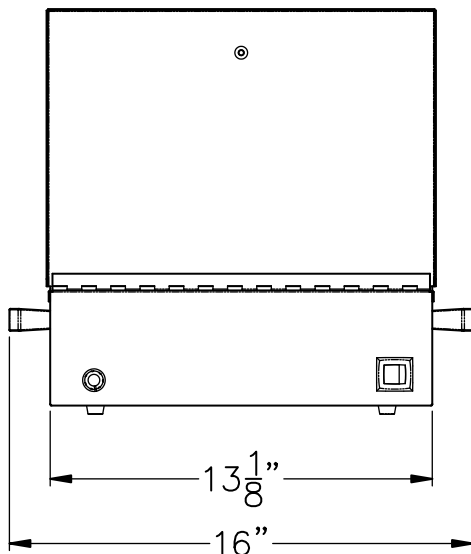
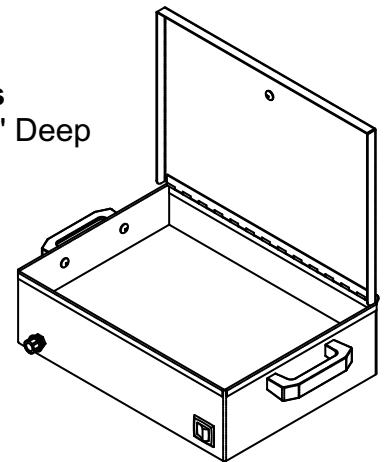
On the Little Splint model, the variable temperature thermostat can maintain water at controlled temperatures between 109°F (43°C) to 196°F (91°C).

The Little Splint's tank interior is constructed of stainless steel, which heats evenly and resists corrosion. Grounded hospital grade plugs and high heat safety switches are standard.

Unit rating is 120V, 4.2A, 50/60Hz.



Inside Dimensions
9-1/2" x 13" x 2-1/4" Deep





Instructions for Operation and Care of Little Splint Compact Splint Pan

The instructions below are indicated by specific symbols. An understanding of these symbols, their companion text and the specific instructions and captions must be understood prior to operation of the equipment and patient treatment.



CAUTION- Ignoring the following could cause injury or equipment damage.



WARNING- These are safety infractions that could result in serious injury.

DANGER- These are possible safety infractions if this equipment is used where oxygen or flammable anesthetics are present.



CAUTION

- All internal parts capable of transmitting electric current are grounded. Therefore, the electrical outlet to which the unit is attached must be properly grounded. Grounding reliability can only be achieved when the equipment is connected to an equivalent receptacle marked "Hospital Only" or "Hospital Grade". If there is any question as to the electrical protection, a qualified electrician should be consulted.
- The table or cart must be level for proper and safe use.
- Little Splint Compact Splint Pans are intended for use only where the person utilizing the treatment is under the supervision of trained personnel.
- **DO NOT** operate the unit dry - always make sure to fill with water before plugging in unit. If the pan is empty, the heating element will burn out.
- Treatment temperature must be monitored closely and, of course, a patient's medical history must be reviewed, as with any heat modality, for heat sensitivity and circulatory problems.

- Always disconnect the line cord plug from the receptacle before working on any unit.
- Do not use bleach or iodine based products to clean the tank as such products can quickly corrode the stainless steel tank resulting in pin holes and leaking water.
- Do not touch cord or plug if you are wet, standing in water or on a wet surface.
- Constant supervision is necessary when the unit is used with children, invalids, or any one who cannot safely operate the unit.



WARNING

- Do not use the unit outdoors.
- Carefully place splinting material inside reservoir to avoid splashing onto skin or coming into contact with hot water.
- Do not reach into hot water with bare hands to remove heated splint material. Use a grasping device, such as tongs, to remove splint material from hot water.
- Refer service and electrical problems to qualified personnel and/or Whitehall Manufacturing only.
- Do not use if the unit, cord or plug has been damaged. Return unit to Whitehall Manufacturing or a qualified service center.
- Do not use an electrical extension cord. Plug unit directly into a properly grounded receptacle. If there is any question on the grounding of the receptacle, call an electrician.
- Replace fuse as marked 6A/250VAC fast acting glass tube type.

DANGER

- Do not operate any splint pan where flammable anesthetics are present.



BASIC SET UP AND USE INSTRUCTIONS

- Place the Little Splint on a secure platform, i.e., a table or big cart.
- Fill the unit to 1" deep. Plug the unit into a properly grounded outlet having a ground fault circuit interrupter either in the receptacle or somewhere in the immediate power line.
- On the Little Splint, the dual thermostat control is set with a high and low setting. The high setting is 196°F (91°C) and the low setting is 109°F (43°C). Allow the unit to reach temperature.
- With 1" of cold water and with the cover closed, operating temperature should be reached in approximately 30 minutes. To reduce the warm up time for the Little Splint, use hot water.
- Note: If possible we recommend the use of deionized water to reduce the build-up of mineral deposits and dirt.

REMOVAL OF WATER

Cool the bath and tip the unit and drain the water into a bucket, sink or drain.

CLEANING AND STERILIZING

Cleaning of the pan can best be accomplished with a very mild, non-scratching household cleaner and a very low abrasion plastic scouring pad lightly applied. On a stainless steel tank, never use a metal scouring pad as it is too abrasive and may leave carbon metal deposits on the stainless which will rust.

Again, disinfection and sterilizing is different from facility to facility, and we have found that alcohol is still the best (but expensive) cleaning and sterilizing solution. Bleaches and/ or iodine should not be used, but if they are – if they must be – that thorough rinsing of all metal parts be accomplished. Never should bleach or iodine be allowed to “soak” on the surface of stainless steel without the solution being immediately washed completely off.

Initial evidence of excessive bleach and/or iodine use or lack of thorough rinsing will be a dulling appearance.

Continued use of such practices will result in pin holes in the stainless steel tank and leaking.

TO CHANGE THE TEMPERATURE SETTING

The temperature is varied by turning the thermostat knob clockwise for an increase and counterclockwise for a decrease in temperature. The temperature on low setting should approximate 109°F (43°C) and on high 196°F (91°C).

CHANGING THE FUSE

Turn the Little Splint off via the controls on the front panel and then unplug the unit. Allow the unit and the water to cool before draining the water from the unit. Next, position the unit to allow access to the rear of the splint pan. Locate the fuse holder caps with the use of a "common" blade screwdriver or fingers and rotate **counterclockwise** approximately 90° or until the cap becomes loose. Remove the fuse holder cap, exposing the glass fuse. Remove the blown fuse.

Once the old fuse has been removed, replace it with a new fuse of the same kind and amperage. Reinstall the fuse holder cap by depressing and rotating **clockwise** approximately 90° and ensure that the fuse holder caps are secured. Refill the Little Splint with at least 1" of water and then plug the unit back into a power outlet. Turn the unit on via front control panel. Allow the water to warm up to the operating temperature and use as required.

Your Little Champ Splint has been manufactured with extreme care, thoroughly tested and is warranted against all defects in workmanship and is warranted against all defects in workmanship or material for a period of 1 year from date of shipment from the factory.

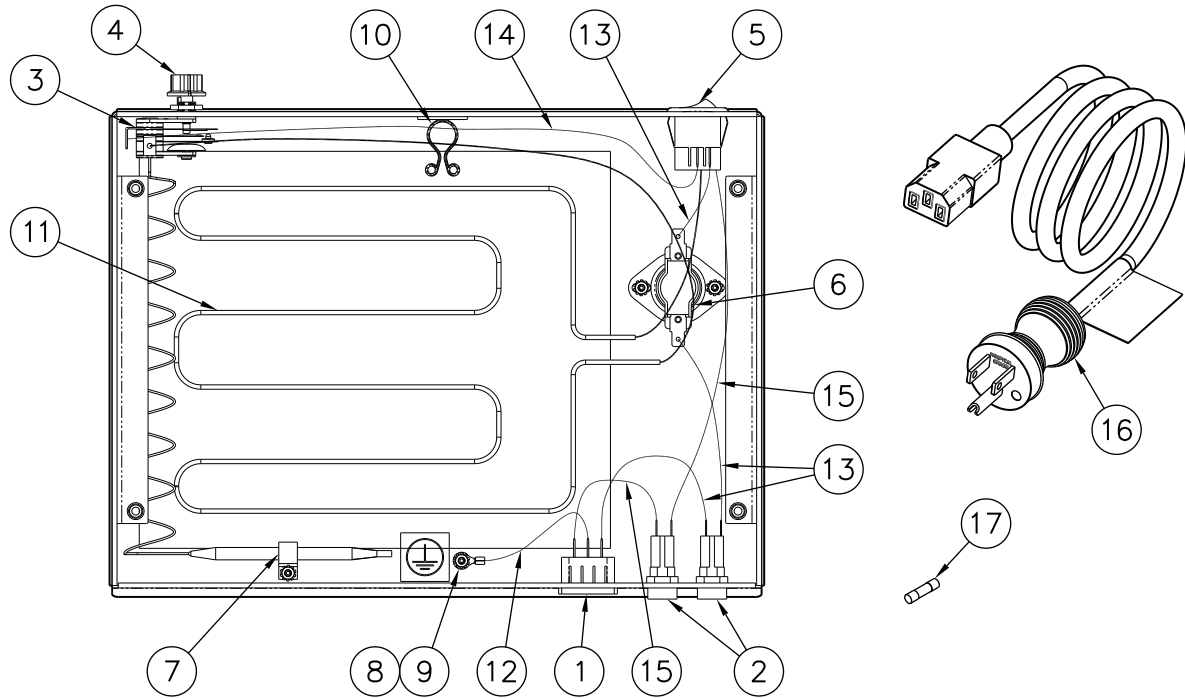
In hard water areas this warranty is dependent on the use of proper water softener to counter the harmful effects of mineral properties contained in the hard water. This warranty is not effective against conditions resulting from accidents, abuse, alterations or misuse.

REPAIR OF UNIT

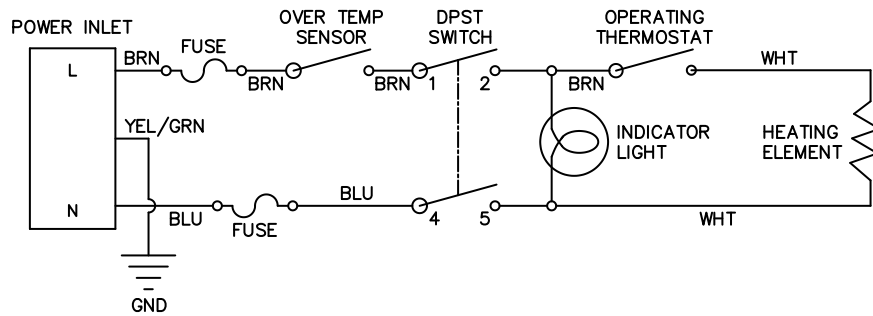
It may be necessary or you may desire to return the Little Splint unit for service. In that case, we would appreciate you contacting Whitehall Manufacturing directly. We will make arrangements for the unit to be returned to our production location. When the unit is received by us, an estimate of repairs will be made and you will be contacted. **Please- we appreciate warranty repair or any other repair be arranged directly with Whitehall Manufacturing. If you are not satisfied with our service, then and only then, contact your dealer.**



Instructions for Operation and Care of Little Splint Compact Splint Pan



WIRING DIAGRAM



Whitehall Part #	Description
1	6505-546-000 10A/15A 250VAC C14 Snap-In Power Outlet
2	0710-230-001 Fuse Holder Assembly
3	6903-150-000 Operating Thermostat- Formasplint
4	6900-141-000 Heater Control Knob Sm Units
5	6505-510-000 120V On/Off Switch
6	6903-144-000 Thermostat Hi-Limit L200
7	6900-102-000 Clamp- Steel Cable
8	0302-010-000 #6-32 UNC Stainless Steel Hex Nut, Sm Pattern
9	0322-003-000 #6 Plated Star Lock Washer (External)
10	0713-000-000 Curly Lock Wire Tie Fastener
11	6705-325-000 120V 500W 8" x 9.5" Foil Heater
12	6704-086-001 Ground Wire Connector Assembly, Green/Yellow
13	6704-077-001 Wire Connector Assembly, Brown
14	6704-080-001 Wire Connector Assembly, Brown
15	6704-085-001 Wire Connector Assembly, Blue
16	6505-056-000 Power Cord, 13A, 125V
17	0710-207-000 Fuse, 6.3 Amp, 5mm



Mailing Address:

P.O. Box 3527 • City of Industry, CA 91744-0527 U.S.A

Physical Address:

15125 Proctor Avenue • City of Industry, CA 91746 U.S.A

Phone 800-782-7706 • 626-968-6681

Fax 626-855-4862

Web: www.whitehallmfg.com

E-mail: info@whitehallmfg.com

Any questions regarding servicing of products in Europe or the Middle East should be directed to:
Niva Medical Company • Olarinluoma 14 B, FIN-02200 Espoo, Finland
Phone 358 9 615 00 540 • Fax 358 9 615 00 545
Web www.nivamedical.fi • E-mail info@nivamedical.fi

MANUFACTURER'S WARRANTY

Whitehall Manufacturing Company warrants that its products are free from defects in material or workmanship under normal use and service for a period of one year from date of shipment. Whitehall's liability under this warranty shall be discharged solely by replacement or repair of defective material, provided Whitehall is notified in writing within one year from date of shipment, F.O.B. Industry, California.

This warranty does not cover installation or labor charges, and does not apply to materials which have been damaged by other causes such as mishandling or improper care or abnormal use. The repair or replacement of the defective materials shall constitute the sole remedy of the Buyer and the sole remedy of Whitehall under this warranty. Whitehall shall not be liable under any circumstances for incidental, consequential or direct charges caused by defects in the materials, or any delay in the repair or replacement thereof. This warranty is in lieu of all other warranties expressed or implied. Product maintenance instructions are issued with each fixture, and disregard or non-compliance with these instructions will constitute an abnormal use condition and void the warranty. Stainless steel must be protected on jobsites during construction and must be properly maintained after the water has been introduced into the fixture, or Whitehall's limited warranty is void. If you have any questions or require technical assistance, please call 800-743-8219.

NOTICE TO KEEP ORIGINAL PACKAGING- Regarding warranty claims: customer must retain original packaging for one year upon receipt of product. If packaging is discarded, it is the customer's responsibility to provide adequate packaging. Any shipping claims that are a direct result of customer-provided packaging materials will be handled by the shipper.