

metron™ VALUE
a Performance Health Brand

ASSEMBLY INSTRUCTIONS

MAT PLATFORMS

All Sizes of MODELS: 240, 242 & 260



ASSEMBLY INSTRUCTIONS FOR MAT PLATFORMS

All sizes of **MODELS 240, 242 & 260**

Combined Load/Force Capacity Models 240 & 242— 700lbs. • Combined Load/Force Capacity Model 260— 500lbs.

Thank you for counting on us to meet your needs by purchasing this fine equipment. All our equipment is designed and manufactured to provide years of dependable service because we want you as a customer now and in the future. Below are easy to follow instructions on how to properly assemble your equipment. Please contact us if you experience any difficulty with the assembly or have questions.

INTENDED USE

Our Mat Platforms, all sizes of models 240, 242 & 260 are specifically designed and engineered for physical therapy use. The combination of force exerted on the table during treatment should not exceed the individual product weight capacity.



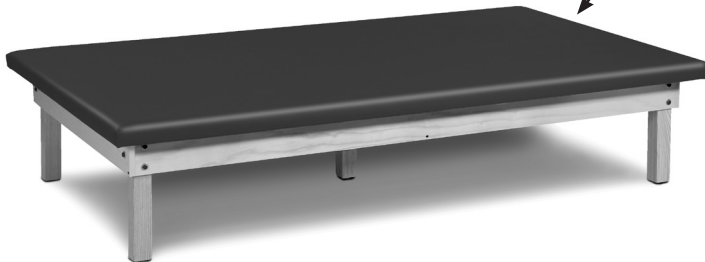
Custom Edge Bumper

MODELS: 240-47, 240-57 & 240-68



Removable Mat

MODELS: 242-47, 242-57 & 242-68



2" of Foam Padding

MODELS: 260-47, 260-57 & 260-68

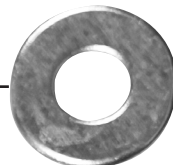
All Models have Hardwood Plywood Frame and Triple-Bolted Hardwood Legs

Hardware Package

- 14 3 1/2" Hex Head Bolts
- 28 7/8" Washers
- 14 1/2" Keps Nuts

Tools Required

- 1/2" Wrench

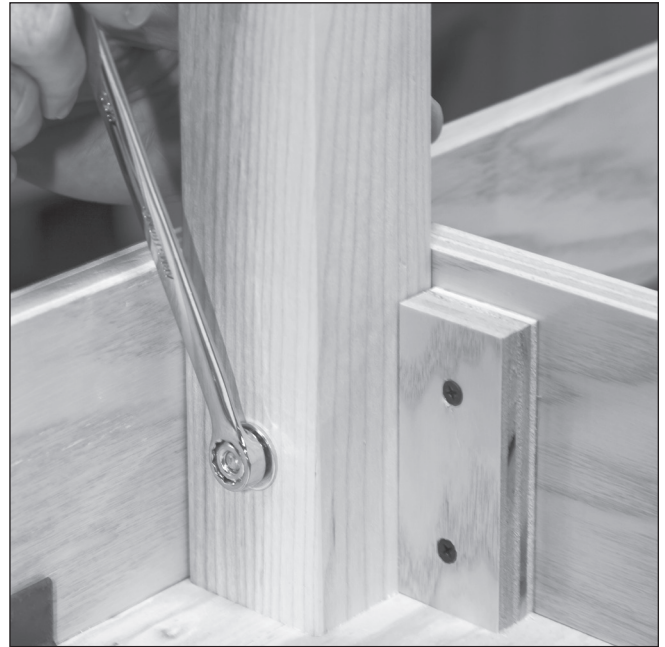


1

Invert top of platform and attach corner legs by inserting the 3 1/2" hex head bolts with a washer through the frame and the coordinating holes in the corner legs. Secure the legs by placing a washer and keps nut on each bolt and tightening with a wrench.

**2**

Secure the side legs (and center leg for model 260) in the same manner as the corner legs.



FOR SAFETY PURPOSES, TAKE TIME TO CHECK ALL NUTS TO INSURE THAT THEY ARE SECURELY TIGHTENED AND THAT THE PLATFORM HAS BEEN PROPERLY ASSEMBLED ACCORDING TO THESE INSTRUCTIONS.

Warranty

The manufacturer warrants products to be free of defects in materials, workmanship or design under normal use for five years on all products, from the date of purchase. This warranty does not include damage resulting from accident, abuse or misuse, alteration, or negligence of the product and expressly excludes normal wear of parts (including but not limited to vinyl). Contact Performance Health for full warranty details.



Care & Cleaning

Our products are built to be durable. With proper care, your equipment will provide years of superior looks and performance. Clean platform with a soft cloth and any mild cleaning agent that may be required for sanitation. NEVER use abrasive scrubbing agents that may scratch the surfaces. **Prior to cleaning entire surface, test cleaning agents on an inconspicuous area. Note that certain cleaning agents can be harmful to the surfaces of the product. Never use alcohol based cleaning agents.**

Periodically check all fasteners to make sure they remain secure.

 **metron**[™] VALUE
a Performance Health Brand
www.performancehealth.com