



To keep upholstery in the good condition, EarthLite recommends thoroughly cleaning the crescent cushion and chest pad periodically to remove all oil residue. Oil and other residues may cause the upholstery to dry out and become brittle over time. We recommend using the product ViraGuard® (sold by EarthLite) for its excellent cleaning and disinfectant properties.

Spray a light yet even coat of ViraGuard or any other recommend cleaner on the upholstery and gently wipe with a soft cloth. A solution of 1 part mild detergent (such as liquid dishwashing detergent) to 10 parts warm water may also be used. Simple Green is another alternative.

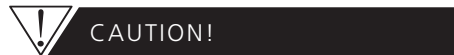
FOLDING, CARRYING, & STORAGE

The TravelMate's mere 9 lbs and compact size makes it ideal for treatments on the go.

To fold for storage or transport - release both Quick-Release Levers and gently lay the unit back flat onto its self. Carefully lock both levers. Unfold the provided carrying case and unzip to open. Place locked and flat unit into case and zip close. Small and compact for easy storage or grip the handle for easy transport.

CLEANING

The TravelMate is designed to be easy to assemble and maintain. If using disposable or cloth crescent cushion covers, the crescent cushion and the chest pad will need only a slight wipe down between treatments.



DO NOT USE HYDROGEN PEROXIDE, ACETONE, PAINT THINNER, UNDILUTED BLEACH, ARMOR ALL TYPE OR INDUSTRIAL CLEANERS. These will damage the upholstery's protective coating and will void the upholstery warranty.

EARTHLITE MESSAGE TABLES
3210 EXECUTIVE RIDGE DR
VISTA, CA 92081
760.599.1112
WWW.EARTHLITE.COM



TRAVELMATE™ SET-UP GUIDE



THANK YOU FOR PURCHASING THE EARTHLITE TRAVELMATE

A DESKTOP, GO-EVERYWHERE MESSAGE SUPPORT SYSTEM THAT ALLOWS PRACTITIONERS TO BRING MESSAGE THERAPY TO ANY HOME OR OFFICE. THE TRAVELMATE HAS BEEN SPECIALLY HAND PACKAGED TO ENSURE IT ARRIVES READY FOR IMMEDIATE USE AND IS DESIGNED TO POSITION IN MERE SECONDS WHEN WALKING THROUGH THESE EASY STEP-BY-STEP INSTRUCTIONS.

SET UP



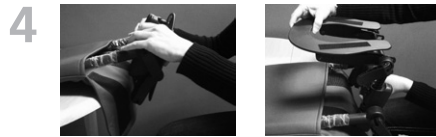
Remove the TravelMate unit and carry case from its box and lay flat on a table or desk surface with the crescent cushion and chest pad facing up. Open plastic and slide unit out. Momentarily set aside both the chest pad and crescent cushion.



Position the open end of the TravelMate to the edge of the table or desk where you plan to work by aligning the earth symbol and base Quick-Release Lever on either side of the TravelMate with the edge of the working surface. The front flap of the protective upholstery pouch will be hanging down. While supporting the TravelMate, pull it a couple of inches from the protective pouch.



Locate both the facecradle platform and base Quick-Release Levers and pull in the opposite direction to release.



Locate the chest plate with the two strips of Velcro that should be facing the ceiling. You will twist the chest bar more than a three-quarters rotation AWAY from you until the Velcro strips face you. You will need to slightly lift the facecradle platform to allow the full rotation needed.



Lock the base Quick-Release Lever while still supporting the facecradle platform. Next, lock the facecradle platform lever and then push the entire unit back into the protective upholstery cover until it butts up against the edge of the work surface.



Place the chest pad into place by aligning it with the opposing Velcro strips on the chest bar. The "U" shape of the chest pad is the top of the pad. Release the base Quick-Release lever to fine tune position the chest pad to a comfortable position and then lock.



Attach the crescent cushion to the facecradle platform by aligning it with the opposing Velcro strips on the facecradle platform. Release the facecradle platform Quick-Release lever to reposition to desired angle and then lock.

FACECRADLE ADJUSTMENTS

THE TRAVELMATE FACECRADLE IS DESIGNED FOR INFINITE ADJUSTMENTS TO ENSURE OPTIMUM POSITIONING AND COMFORT FOR YOUR CLIENTS. BOTH ANGLE AND HEIGHT ADJUSTMENTS ARE MADE WITH A FEW ADDITIONAL SIMPLE STEPS.

1 Set up the TravelMate according to instructions. Have client seated and positioned in front of the TravelMate. Have client press into the chest pad.

2 To adjust the angle of the facecradle, locate the Quick-Release lever and pull in the opposite direction to release. Client should grasp both sides of the facecradle platform when tilting to the desired angle, and then lock by pulling the Quick-Release lever in the opposite direction.

3 To adjust the height of the facecradle, locate the two black knobs on the back of the unit. Twist both counter-clockwise to loosen. Use both hands to pull evenly to desired height. Secure each knob independently by turning the knobs clockwise until firm.

4 Client is now ready to lean forward, having their weight supported by the chest pad and their face comfortably positioned in the facecradle. Clients can position their arms on the table, (hands down and either slightly outstretched or crossed comfortably around the unit) in preparation of their treatment.

Note: Turn knobs firmly until they stop but do not over tighten to avoid damaging to the threads.

Please note: Clients of all shapes and sizes will enjoy the treatments on the TravelMate once a few adjustments are made to accommodate their individual body sizes and comfort preferences. Additionally, different positions better accommodate different types of treatment.

